

User manual



V1.2

Print using the shared HotFolders - Samba (SMB) -



Basics

The SmartD90EV implements Samba (SMB) protocol to share its internal HotFolders. It makes very easy create a network connection between computers (MAC, Windows, Linux) and the SmartD90EV and then, send the file images stored in these devices by simply “Click” ->”Drag” and “Drop” the files into the HotFolders.

Smartphones can also be linked with the SmartD90EV by means of hundreds of apps that implement sharing folders protocols.

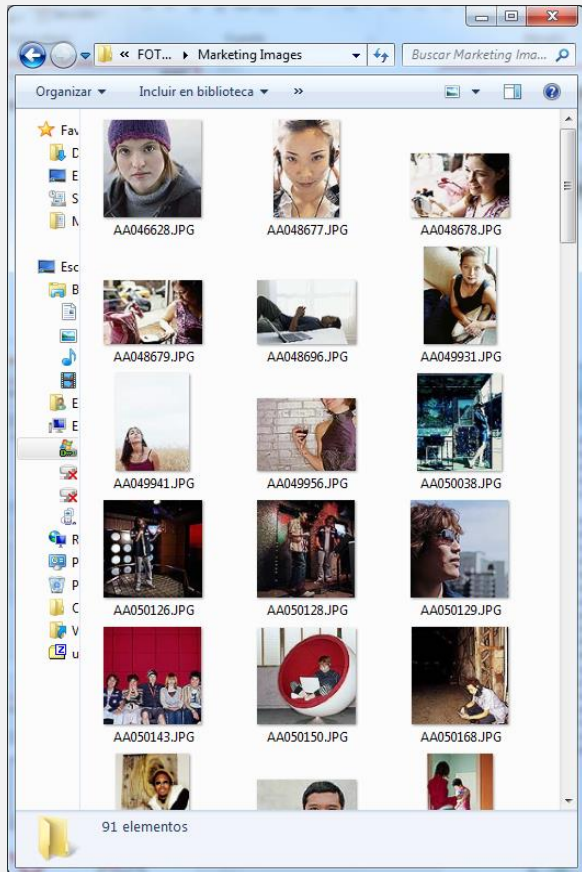
Each one of the shared HotFolders can be setup according to the printing format desired. It is possible to add decoration frames and also text.

This configuration allows an easy and fast solution to print images at any event. But also gives a standard communication way to developers to send the image files to the SmartD90EV .

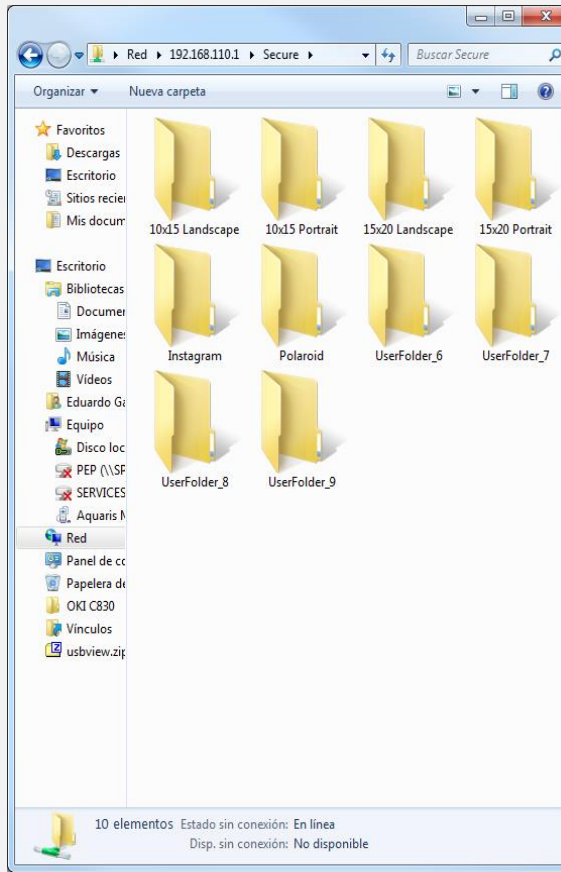
To access to the SmartPhotoPrinter shared folders it could be needed a User name and Password according to the SmartPhotoPrinter settings.

- Log into the Maintenance web as admin -> Stop Service -> Top Menu -> Additional Settings -> Shared folders

Sharing SmartD90EV HotFolders with Windows



Images stored on a PC folder



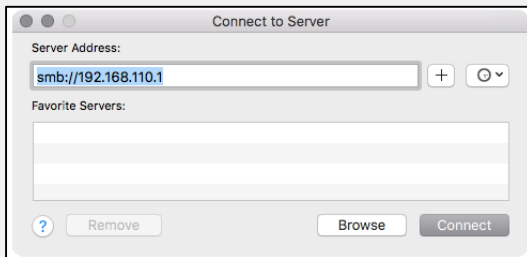
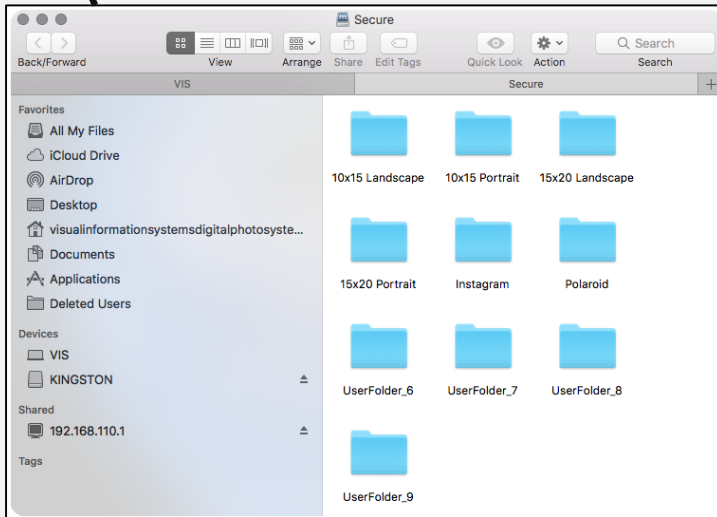
Windows File Explorer -> type: `\\192.168.110.1`
SmartPhotoPrinter shared folders

1. Connect your PC with the SmartD90EV WiFi



2. Open a File Explorer window to display the local images stored in your PC.
3. Open a second File Explorer window and type: [\\192.168.110.1](http://192.168.110.1).
4. Click on the secure folder
5. Then, type the user name and password in the prompted dialogue window
6. Click an image from the PC image local folder, drag it and drop it on the desired SmartD90EV shared HotFolder.

Sharing SmartD90EV HotFolders with mac OSX Sierra



Finder -> Go -> Connect to server -> Smb://192.168.110.1

1. Connect your Mac with the SmartD90EV WiFi

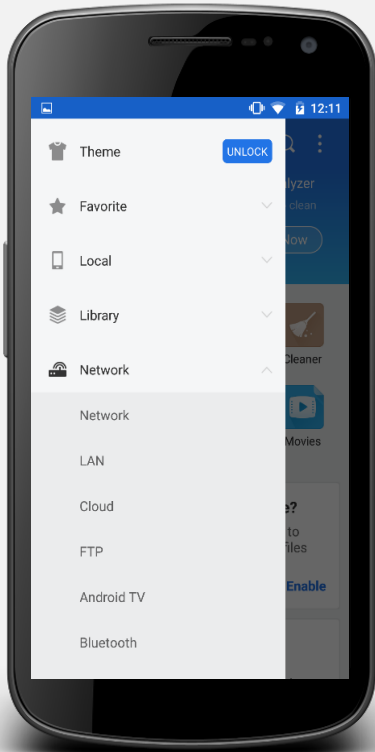


2. Open Finder, then click on Go tab and select "Connect to server" item from the drop list.
3. On the dialogue window launched type: [\\192.168.110.1](smb://192.168.110.1) and the user name and password as they are set in rthe SmartPhotoPrinter settings.
4. Click an image from a Mac local folder, drag it and drop it on the desired SmartD90EV shared HotFolder.

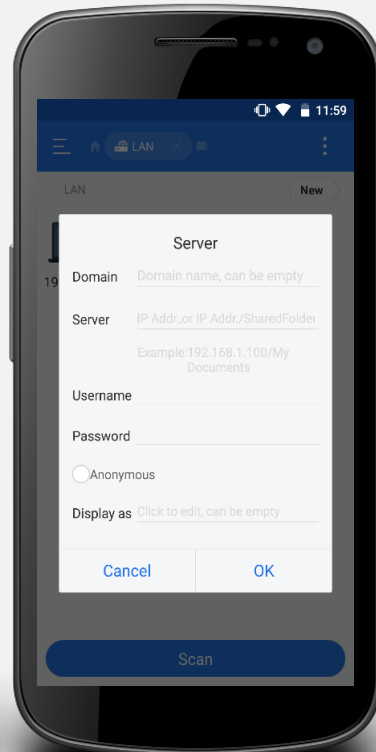
Sharing SmartD90EV HotFolders with ES File Explorer for Android



ES File Explorer
File Manager



Es File Explorer "Home" menu

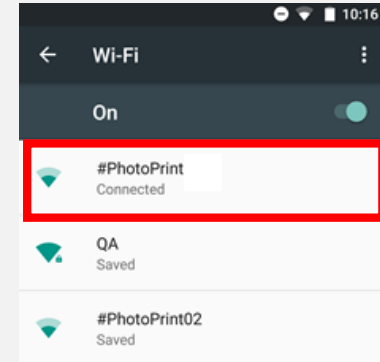


Es File Explorer "Lan" setting menu



SmartPhotoPrinter shared folders

1. Connect your Smartphone to the SmartD90EV WiFi



2. Launch Open ES File Explorer app and select Home menú (Upper left button).
3. Select "Network" item and the "LAN"
4. Fill in the fields to setup a Lan connection between the Smartphone (clent) and the SmartPhotoPrinter (server).
 - Server: [192.168.110.1](#)
 - Usserr and Password as they have been set in the SmartPhotoPrinter maintenance web.
5. Click on the new created connection to access the SmartPhptoPrinter shared folders

- <http://www.mitsubishielectric-printing.com>
- <http://www.messec.net>